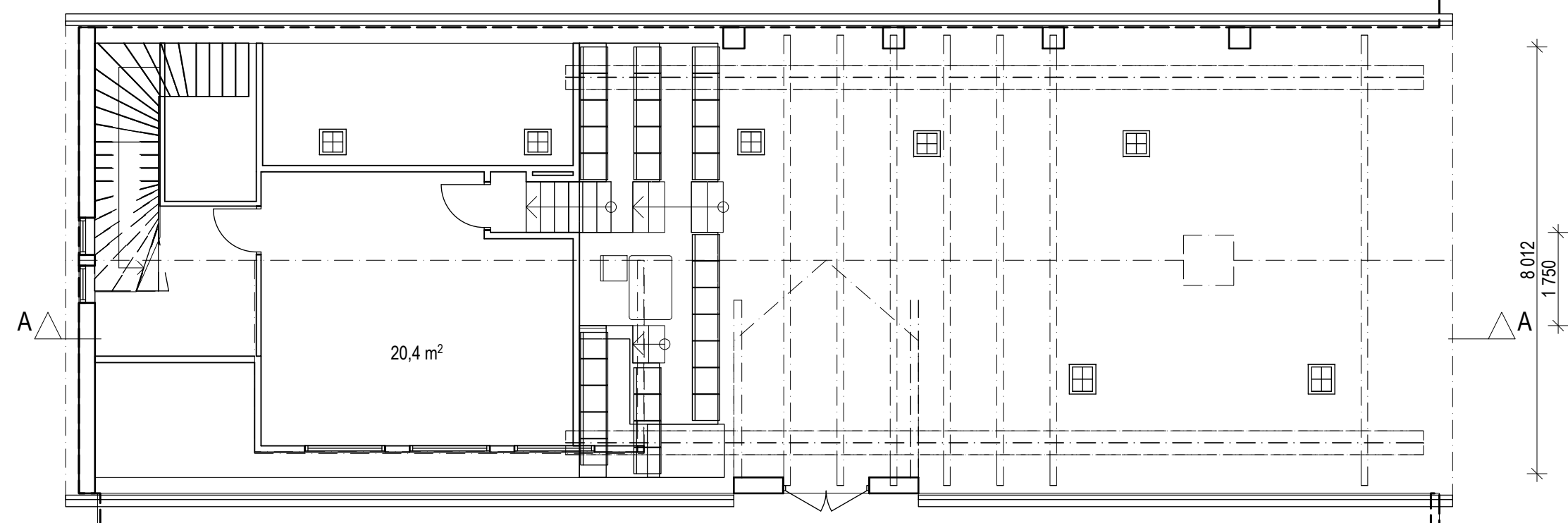


PLAN 1

2 579

PROGRAM
 TEATERRUM 1; ca 120 kvm
 FOAJÉ/FUNKTIONER /TEATERRUM 2; ca 63 kvm
 SITTPLATSER; 77-87p
 Plan 2
 ca 23 kvm installation
 ca 10kvm kommunikation



PLAN 2