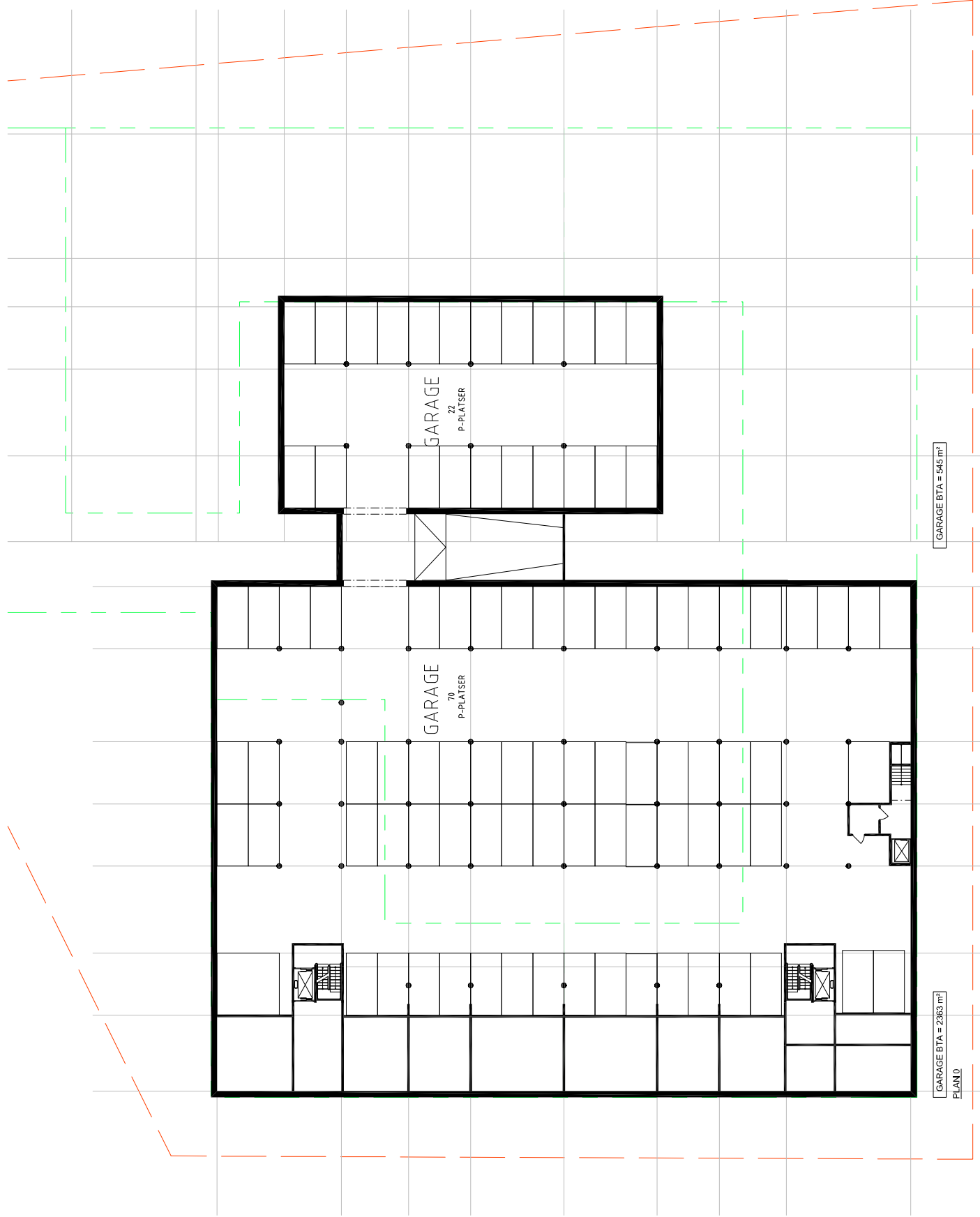


YTOR ALLA PLAN

LOKAL 2296 kvm BTA
BOSTÄDER 9368 kvm BTA
GARAGE 2908 kvm BTA

BILPLATSBEHÖV
97 PLATSER

REDOVISAT ANTAL P-PL
92+5 PLATSER=97 PLATSER



GARAGE BTA = 545 m²

GARAGE BTA = 2363 m²

PLAN 0

STORA RÅBY ET SO, LUND

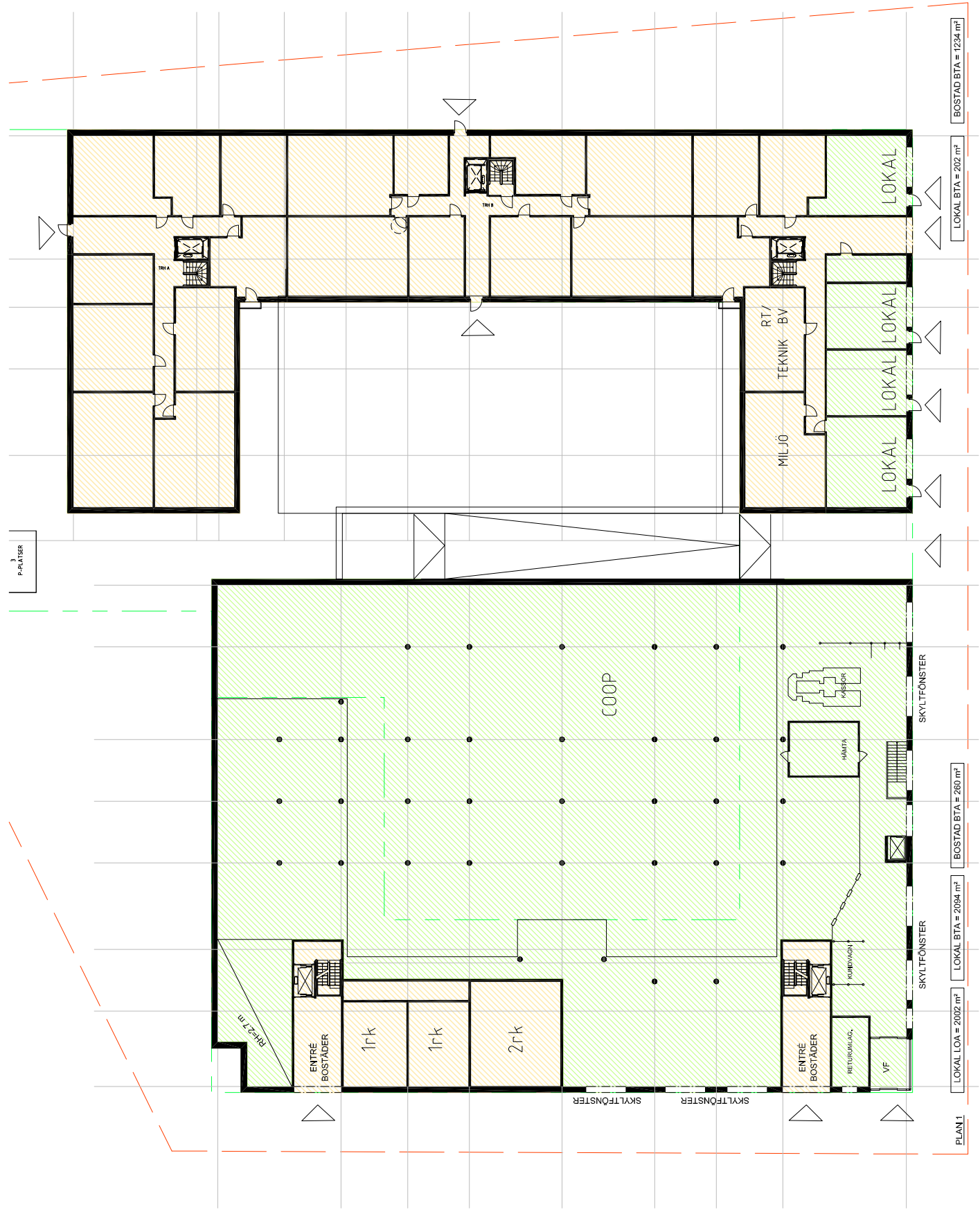
PROGRAMHANDLING - SKISS REVIDERAD DP

PLAN 0 / KÄLLARPLAN

SKALA 1:300 (A3)

0 50

2021.06.03



PLAN 1
 LOKAL LOA = 2002 m² LOKAL BTA = 2084 m² BOSTAD BTA = 260 m² BOSTAD BTA = 1234 m²

STORA RÅBY ET SO, LUND

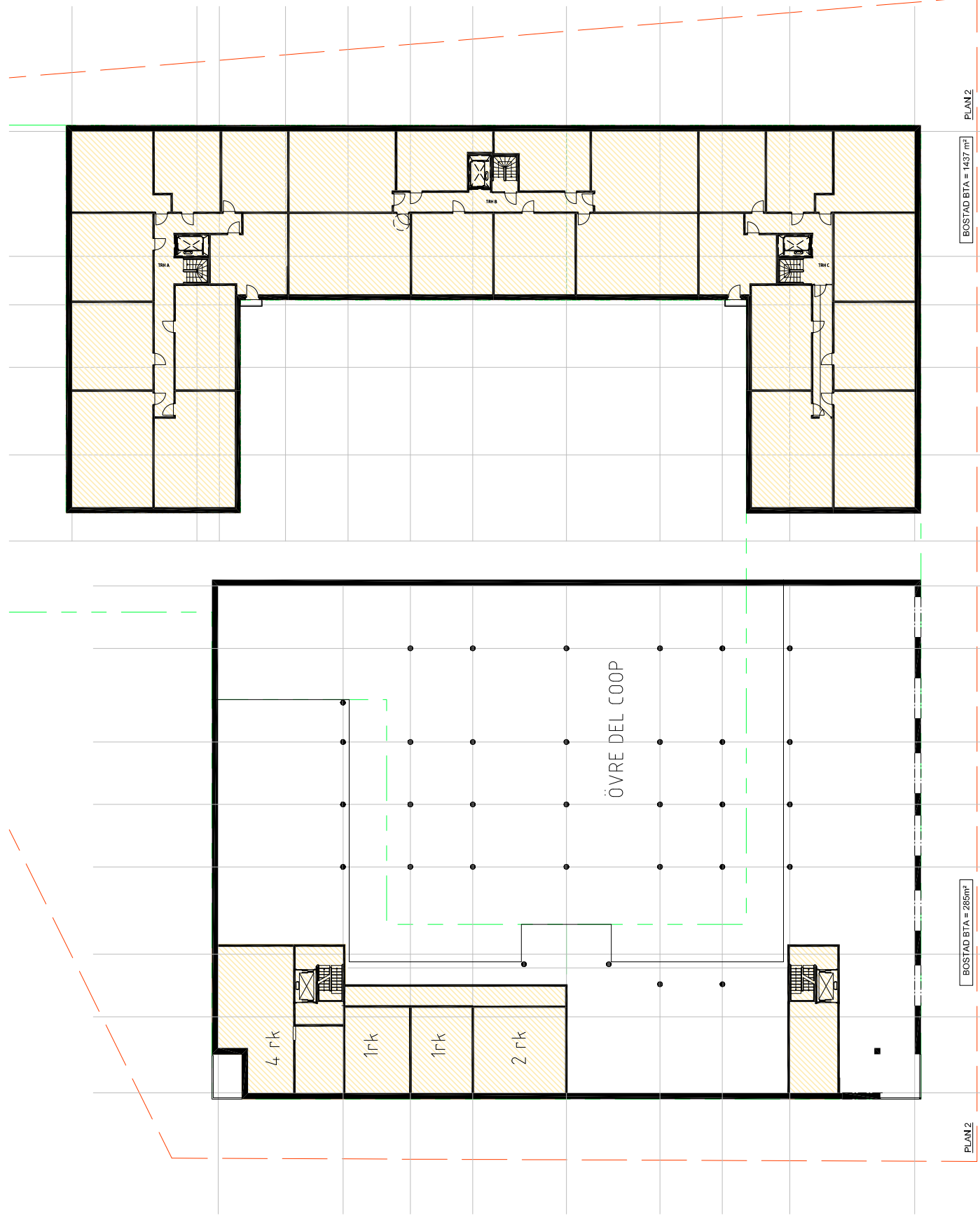
PROGRAMHANDLING - SKISS REVIDERAD DP

PLAN 1 / BOTTENPLAN

SKALA 1:300 (A3)

0 50

2021.06.03



PLAN 2

BOSTAD BTA = 265m²

PLAN 2

BOSTAD BTA = 1437 m²

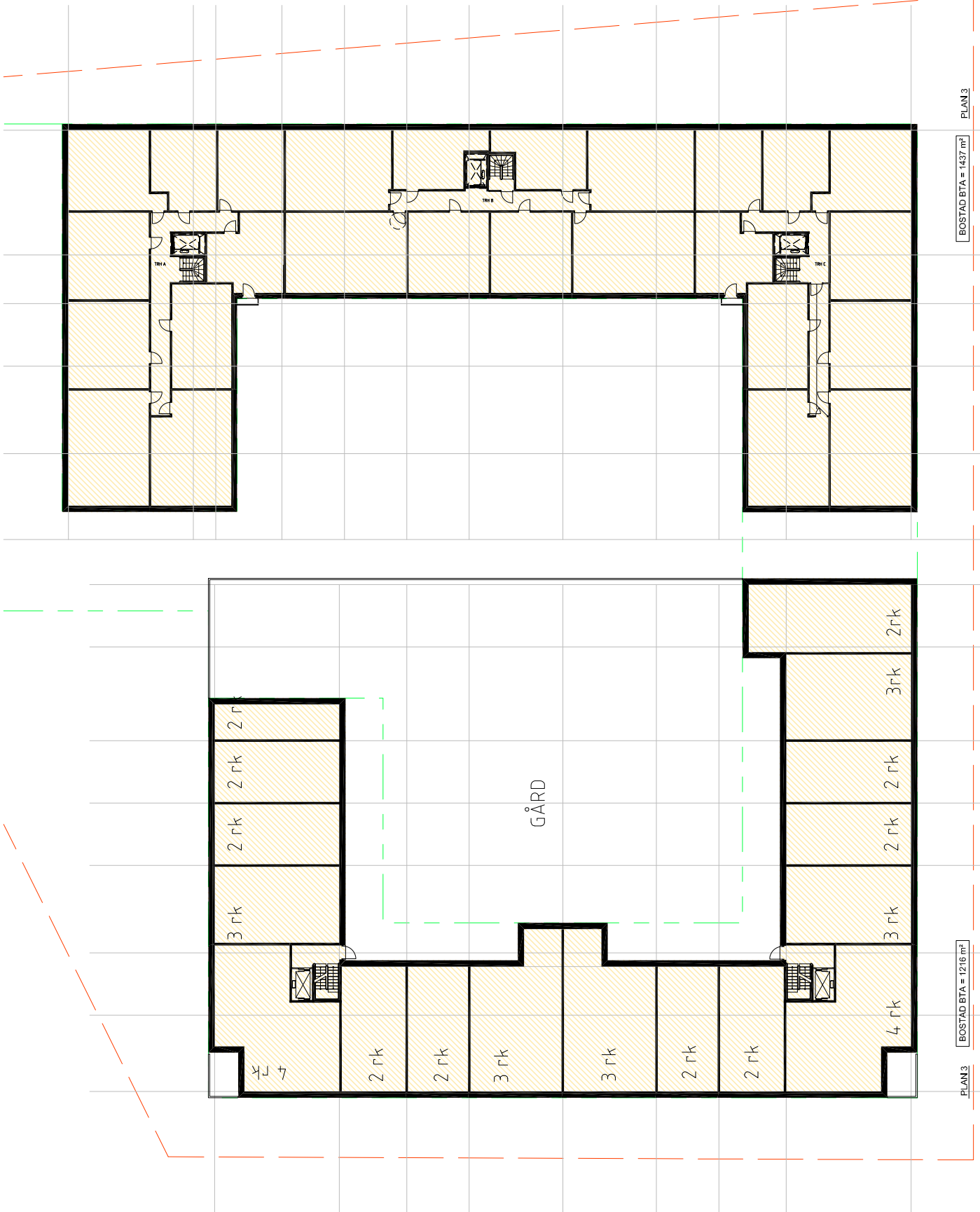
STORA RÅBY ET SO, LUND

PROGRAMHANDLING - SKISS REVIDERAD DP

PLAN 2

SKALA 1:300 (A3)

2021.06.03



PLAN 3

BOSTAD BTA = 1216 m²

PLAN 3

BOSTAD BTA = 1437 m²

STORA RÅBY ET SO, LUND

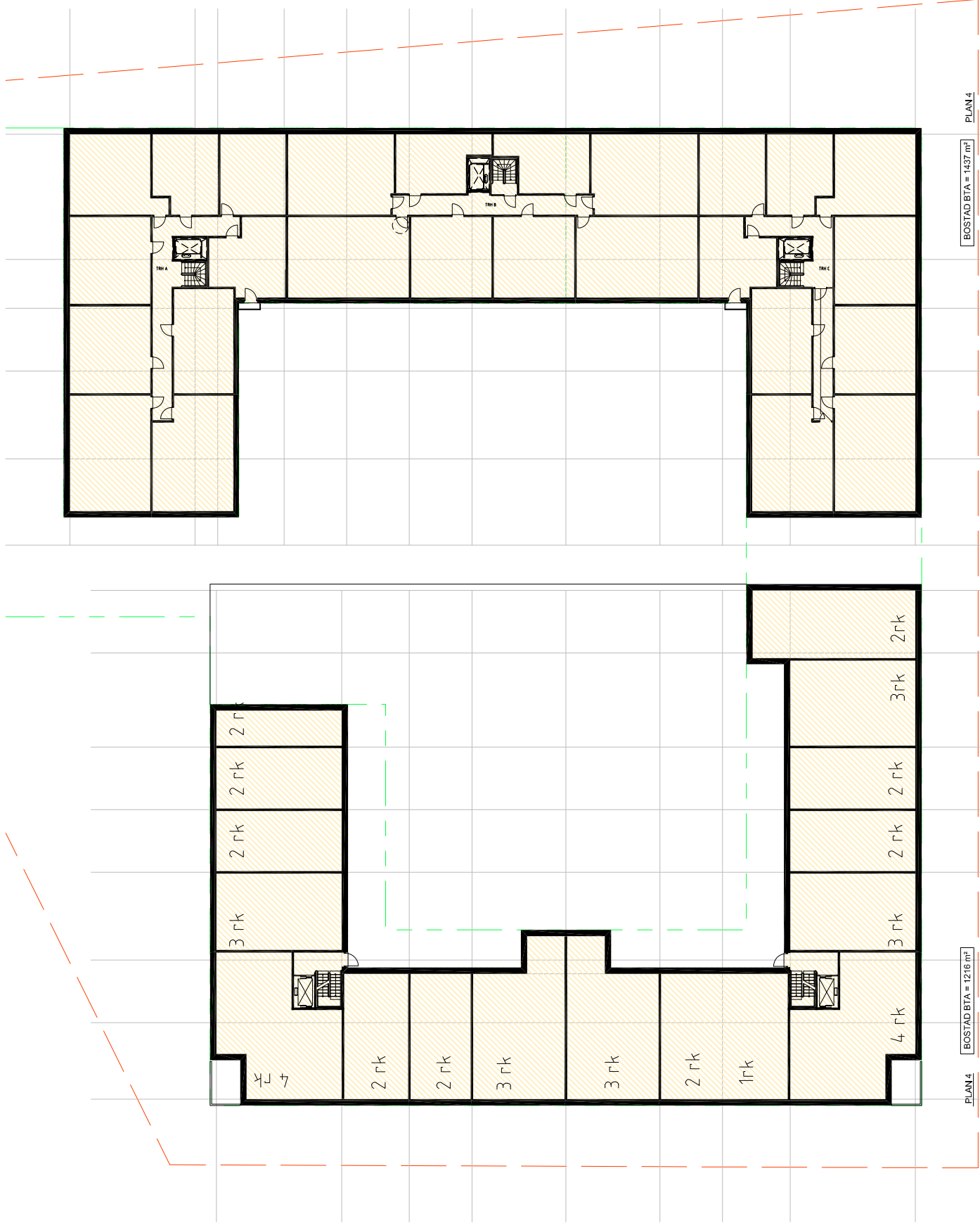
PROGRAMHANDLING - SKISS REVIDERAD DP

PLAN 3

SKALA 1:300 (A3)

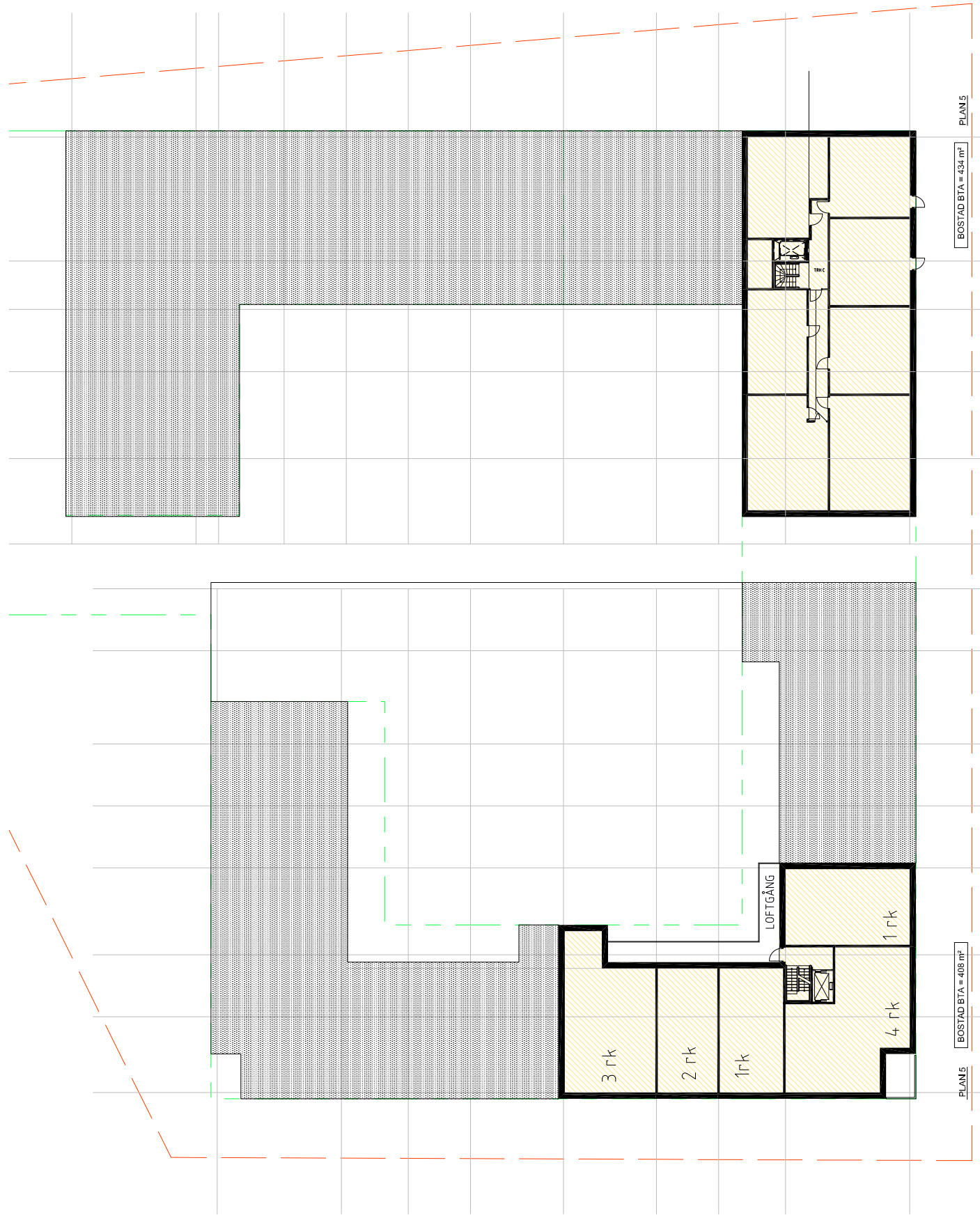
0 50

2021.06.03



PLAN 4
SKALA 1:300 (A3)

STORA RÅBY ET SO, LUND
PROGRAMHANDLING - SKISS REVIDERAD DP



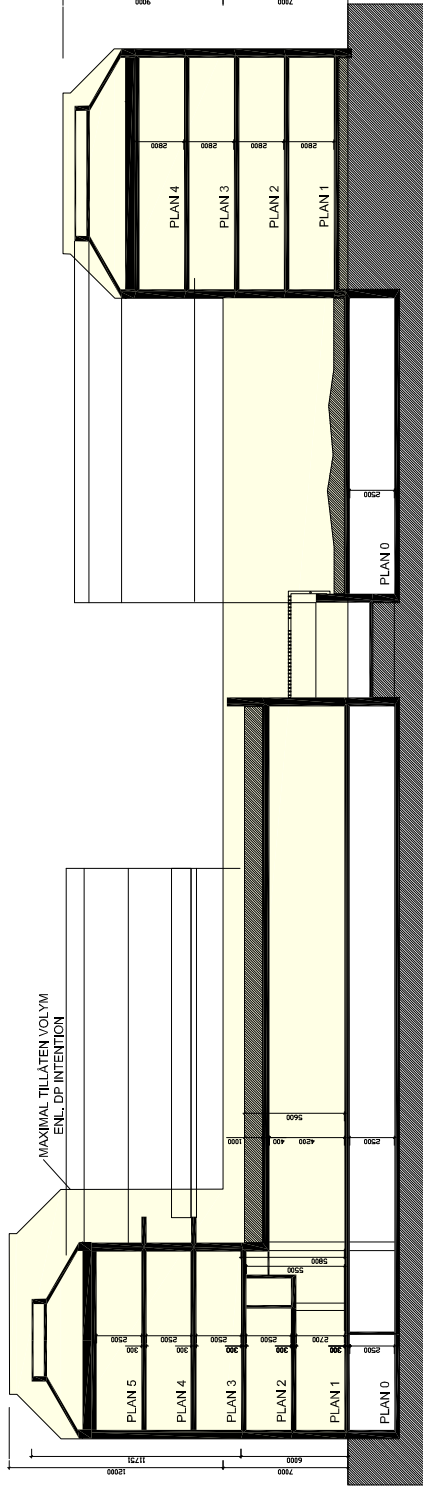
STORA RÅBY ET SO, LUND

PROGRAMHANDLING - SKISS REVIDERAD DP

PLAN 5

SKALA 1:300 (A3)

2021.06.03



STORA RÅBY ET SO, LUND

PROGRAMHANDLING - SKISS REVIDERAD DP

PRINCIPSEKTION

SKALA 1:300 (A3)

0 50

2021.06.03